



HURRICANE DELTA UPDATE

10:00 AM CDT

Thursday October 8 2020

Prepared by: Roger Erickson, NWS Lake Charles

What has changed: Forecast track shifts a little more to the west. Hurricane warning and storm surge warning now in effect for Jefferson County.



NWS Watches In Effect

Hurricane Delta



Lake Charles
WEATHER FORECAST OFFICE

■ **Hurricane Warning:**

- Southeast Texas: Jefferson County
- Southwest Louisiana: Allen, Beauregard, Calcasieu, Cameron, and Jeff Davis Parish
- South Central Louisiana: Acadia, Evangeline, Iberia, Lafayette, St. Landry, St. Martin, St. Mary, and Vermilion Parish
- Central Louisiana: Avoyelles and Rapides Parish

■ **Tropical Storm Warning:**

- Southeast Texas: Hardin, Jasper, Newton, and Orange County
- Central Louisiana: Vernon Parish

NWS Watches In Effect

Hurricane Delta



Lake Charles
WEATHER FORECAST OFFICE

■ **Storm Surge Warning:**

- Southeast Texas: Jefferson County
- Southwest Louisiana: Cameron and Jeff Davis Parish
- South Central Louisiana: Acadia, Iberia, St. Martin, St. Mary, and Vermilion Parish

■ **Flash Flood Watch:**

- Southwest Louisiana: Allen, Beauregard, Calcasieu, Cameron Parish
- South Central Louisiana: Acadia, Evangeline, Iberia, Lafayette, St. Landry, St. Martin, St. Mary, and Vermilion Parish
- Central Louisiana: Avoyelles, Rapides, Vernon Parish

Situation Overview

Hurricane Delta



Lake Charles
WEATHER FORECAST OFFICE

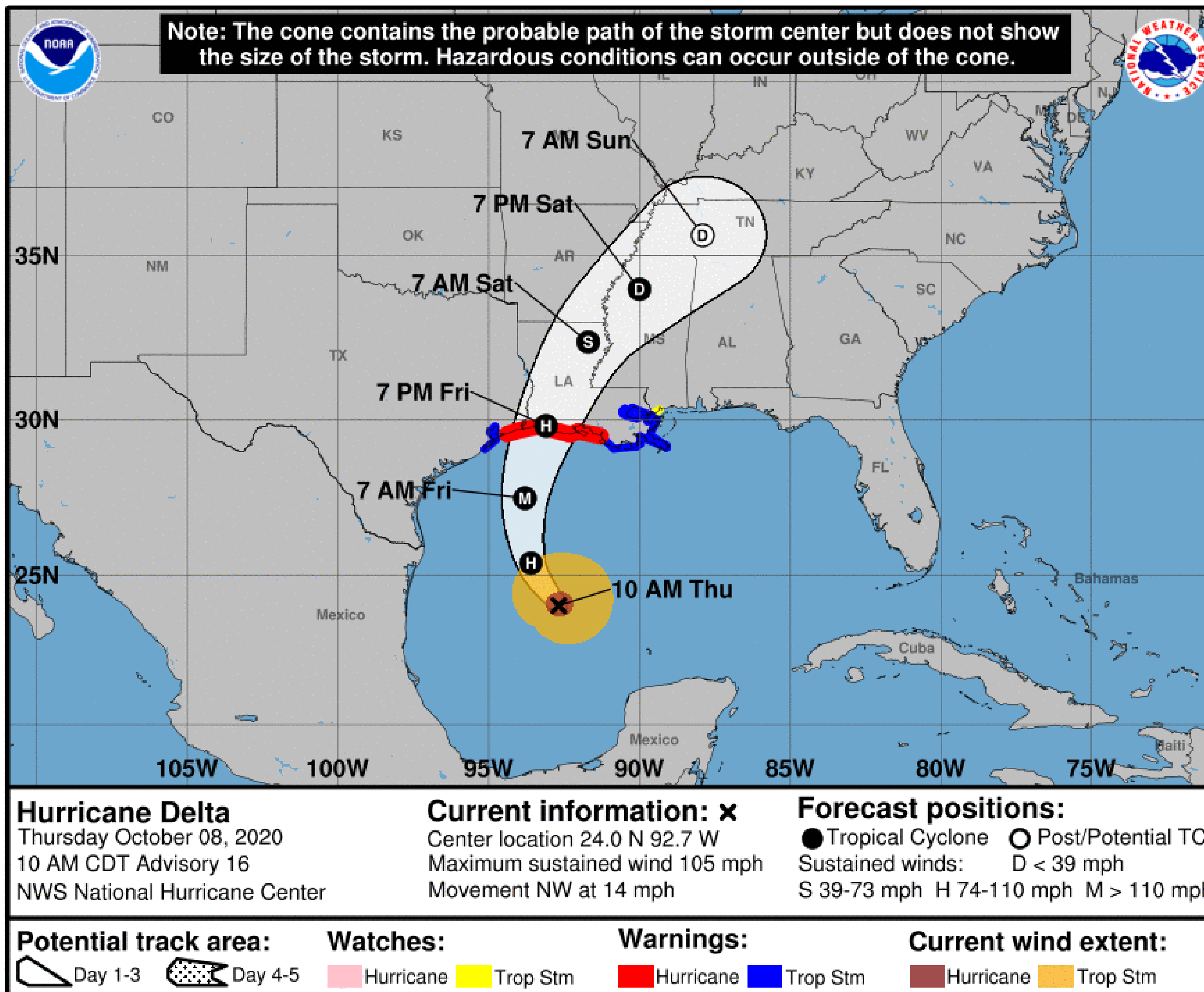
- Hurricane Delta has shifted a little more to the west this morning. Because of that, a hurricane warning and storm surge warning has been extended west to Jefferson County.
- Landfall projections show Delta as a category 2 hurricane on Friday afternoon or evening in Cameron Parish, moving to the northeast across parts of southwest, south central, and central Louisiana Friday night.
- Life threatening storm surge, dangerous hurricane force winds, and heavy rain are expected along and east of the track of Delta as it moves inland across Louisiana.

Situation Overview

Hurricane Delta



Lake Charles
WEATHER FORECAST OFFICE



10:00 AM CDT Thu Oct 8

Location: $24.0^{\circ}\text{N } 92.7^{\circ}\text{W}$

Moving: *NW at 14 mph*

Min pressure: *968 mb*

Max sustained: *105 mph*

415 Miles from Port Arthur, TX

400 Miles from Cameron, LA

415 Miles from Abbeville, LA

420 Miles from New Iberia, LA

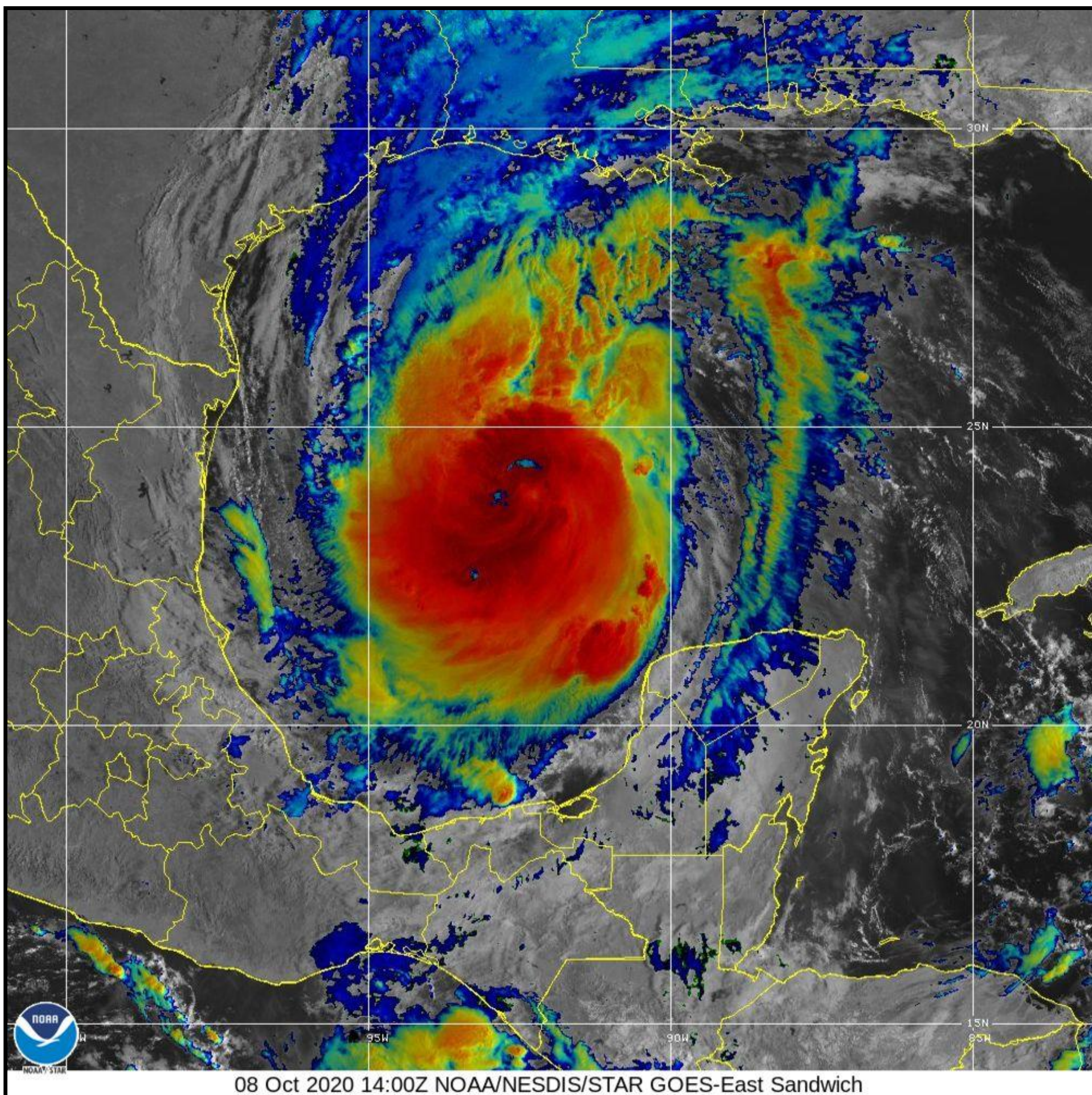
405 Miles from Morgan City, LA

Current Satellite View

Hurricane Delta



Lake Charles
WEATHER FORECAST OFFICE



- The northern side of Delta is already encountering some wind shear.
- Hurricane Force winds extend 15 to 30 miles from the center of circulation.
 - It will be 25 to 30 miles by landfall.
- Tropical Storm Force winds extend 60 to 110 miles from the center of circulation.
 - It will be 90 to 140 miles by landfall.

08 Oct 2020 14:00Z NOAA/NESDIS/STAR GOES-East Sandwich

Critical Turn to the Right

Hurricane Delta



Lake Charles
WEATHER FORECAST OFFICE



Delta has started turning to the right. This turn will increase as we go through this afternoon and tonight.

TS Wind Speed Probabilities

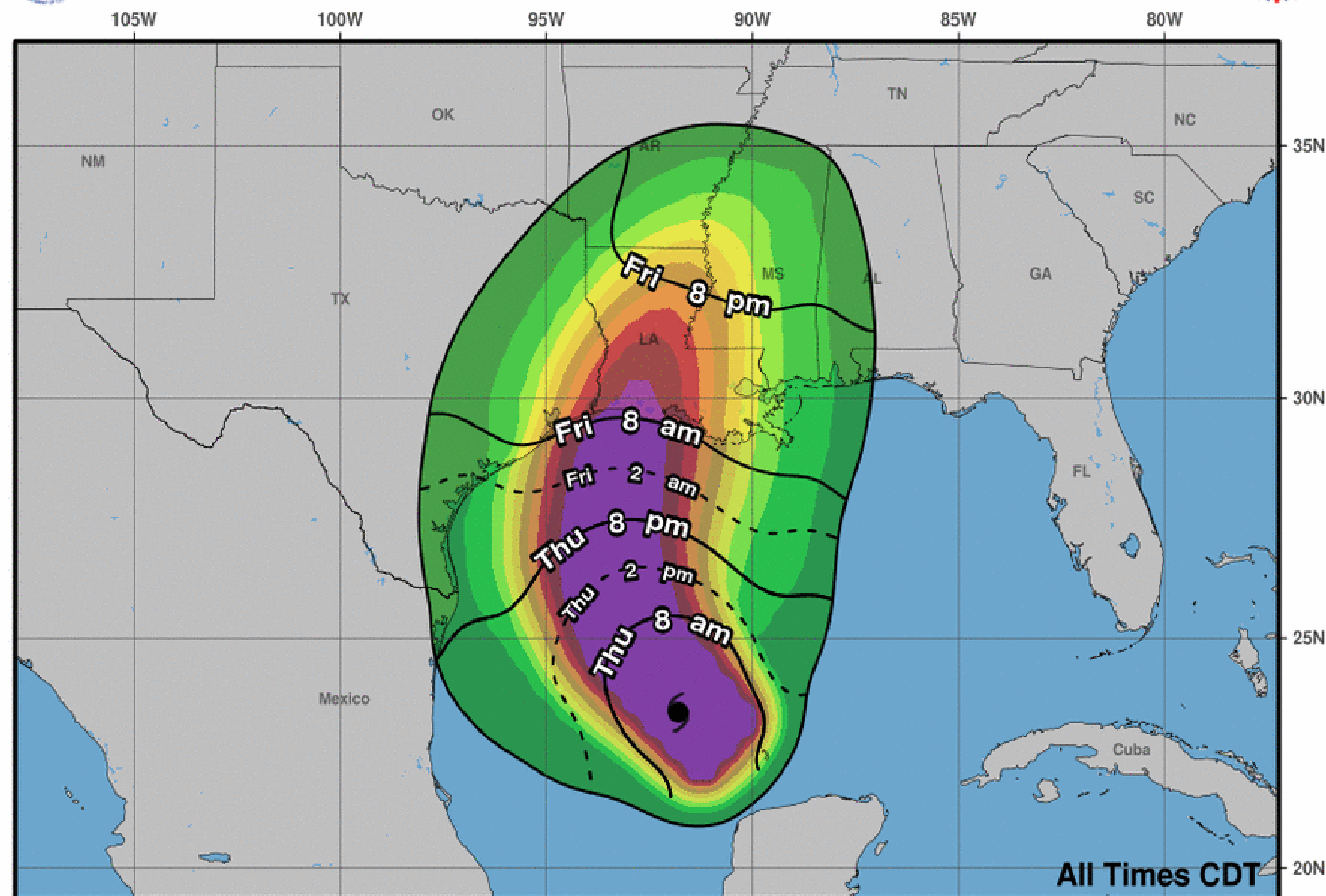
Hurricane Delta



Lake Charles
WEATHER FORECAST OFFICE



Most Likely Arrival Time of Tropical-Storm-Force Winds



Hurricane Delta
Thu. Oct. 8, 2020 4 am CDT
Advisory 15

Storm Location &
Wind Speed
○ < 34 kt (39 mph)
○ 34-63 kt (39-73 mph)
● ≥ 64 kt (74 mph)

5-day chance of receiving sustained 34+ kt (39+ mph) winds
5 10 20 30 40 50 60 70 80 90 100 %

Tropical Storm Wind Speed Probabilities

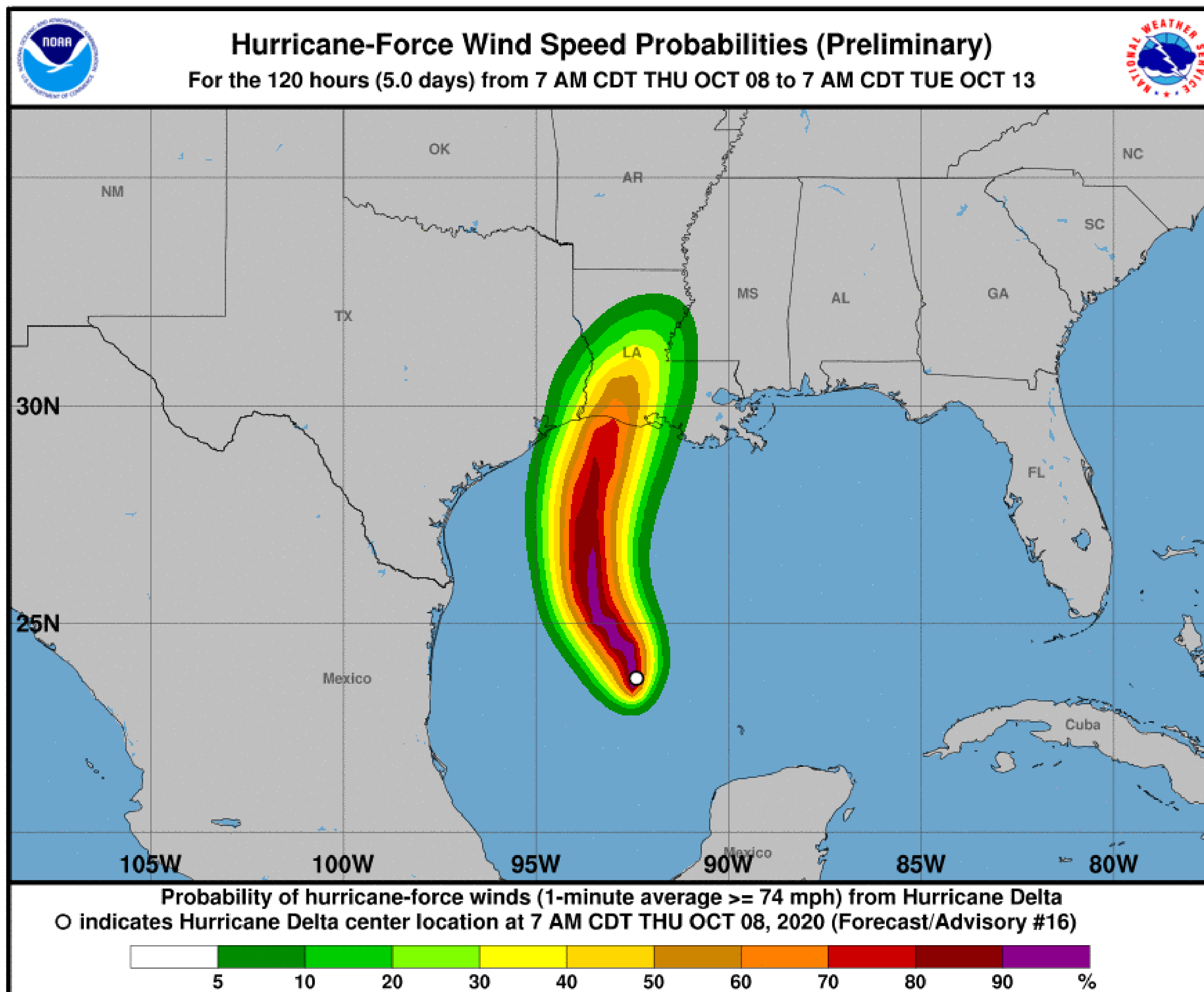
- Southeast Texas: 60-90%
- Southwest Louisiana: 80-100%
- South Central Louisiana: 70-90%
- Central Louisiana: 60-90%

Hurricane Wind Speed Probabilities

Hurricane Delta



Lake Charles
WEATHER FORECAST OFFICE



Hurricane Wind Speed Probabilities

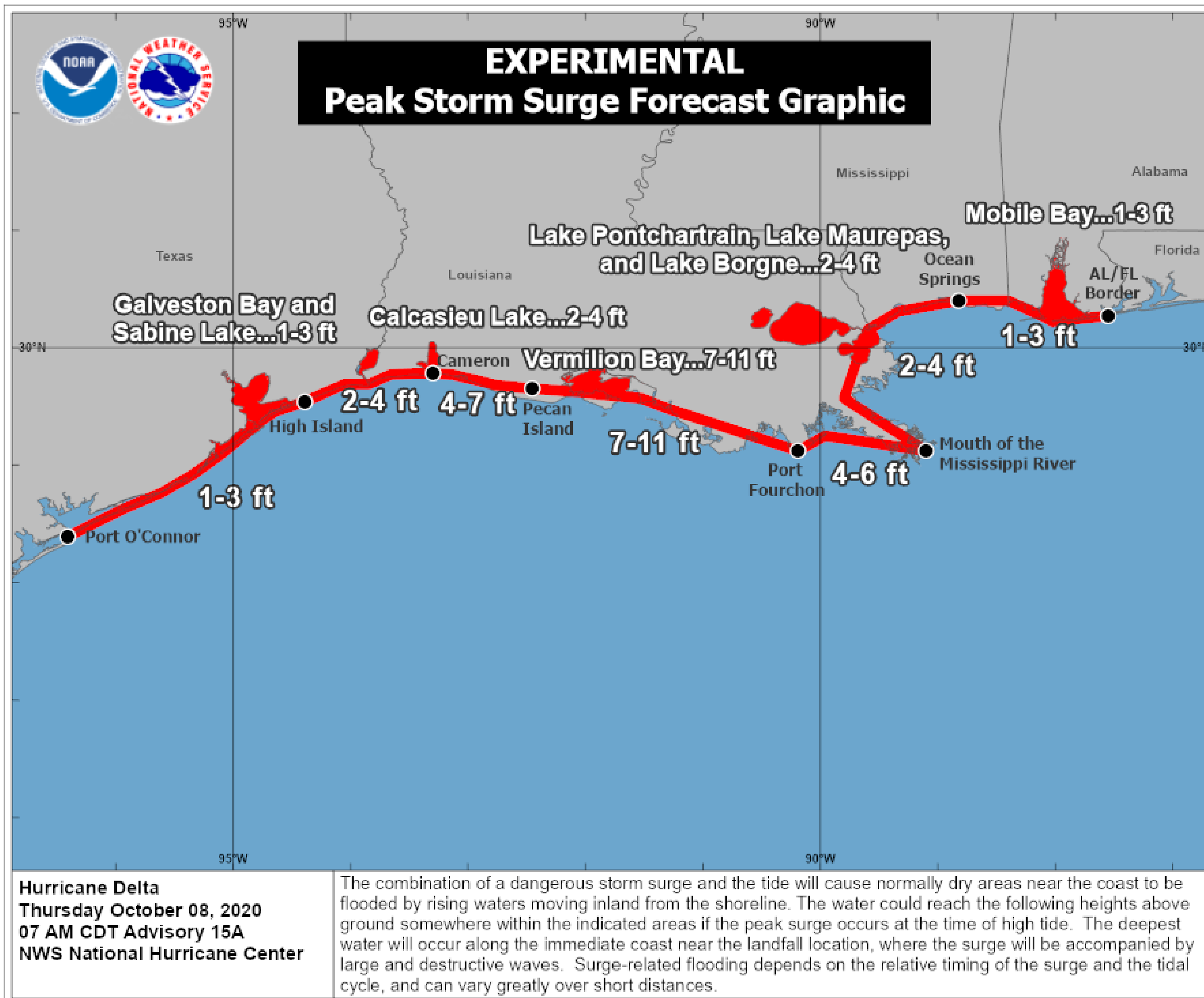
- Southeast Texas: 10-40%
- Southwest Louisiana: 20-70%
- South Central Louisiana: 10-40%
- Central Louisiana: 10-50%

Potential Storm Surge

Hurricane Delta



Lake Charles
WEATHER FORECAST OFFICE



Storm Surge
in feet above ground level

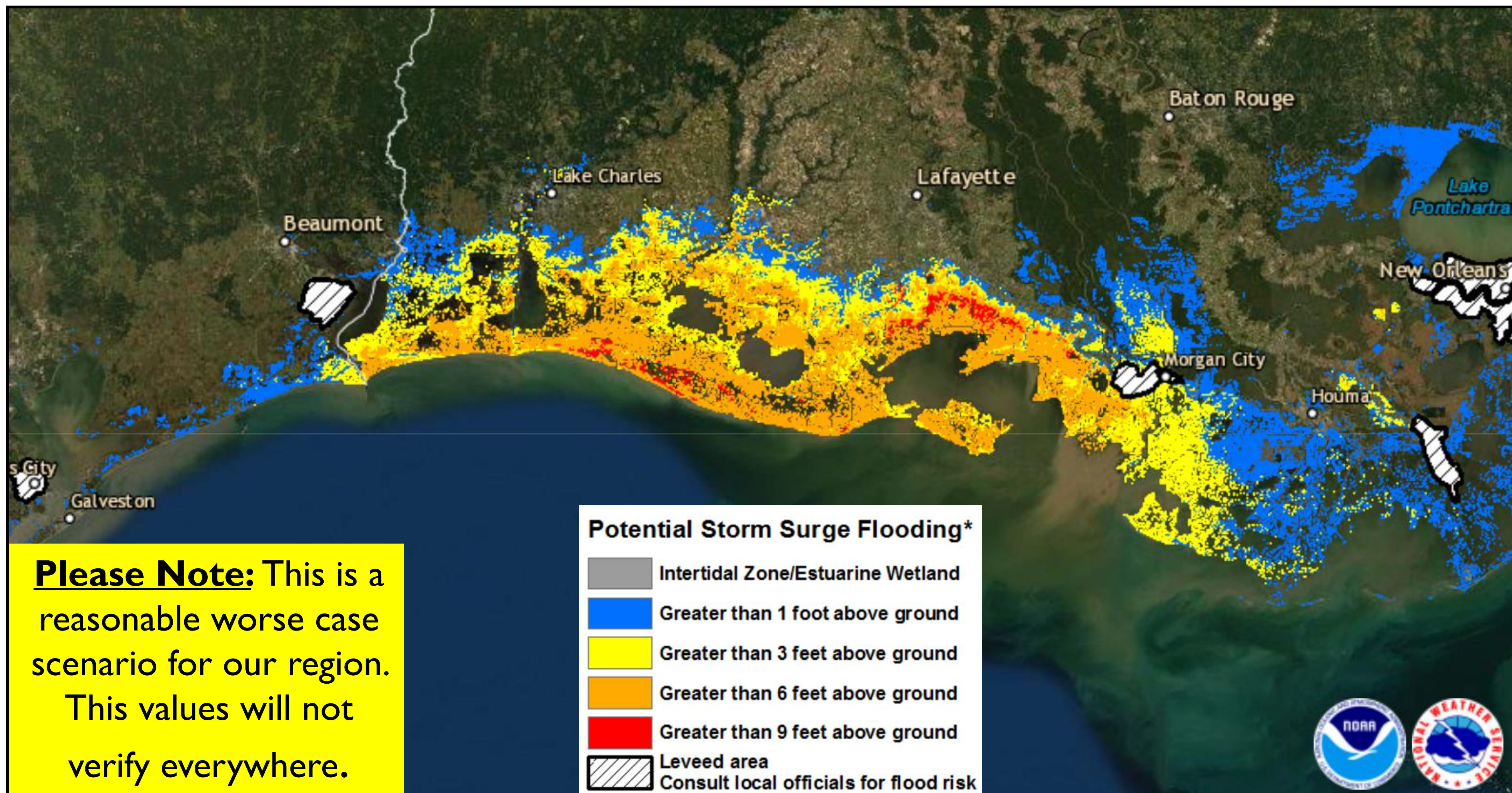
Southeast Texas: 2-4 feet
Southwest Louisiana: 3-10 feet
South Central Louisiana: 7-11 feet

Potential Storm Surge

Hurricane Delta



Lake Charles
WEATHER FORECAST OFFICE



Please Note: This is a reasonable worse case scenario for our region. This values will not verify everywhere.

Potential Storm Surge

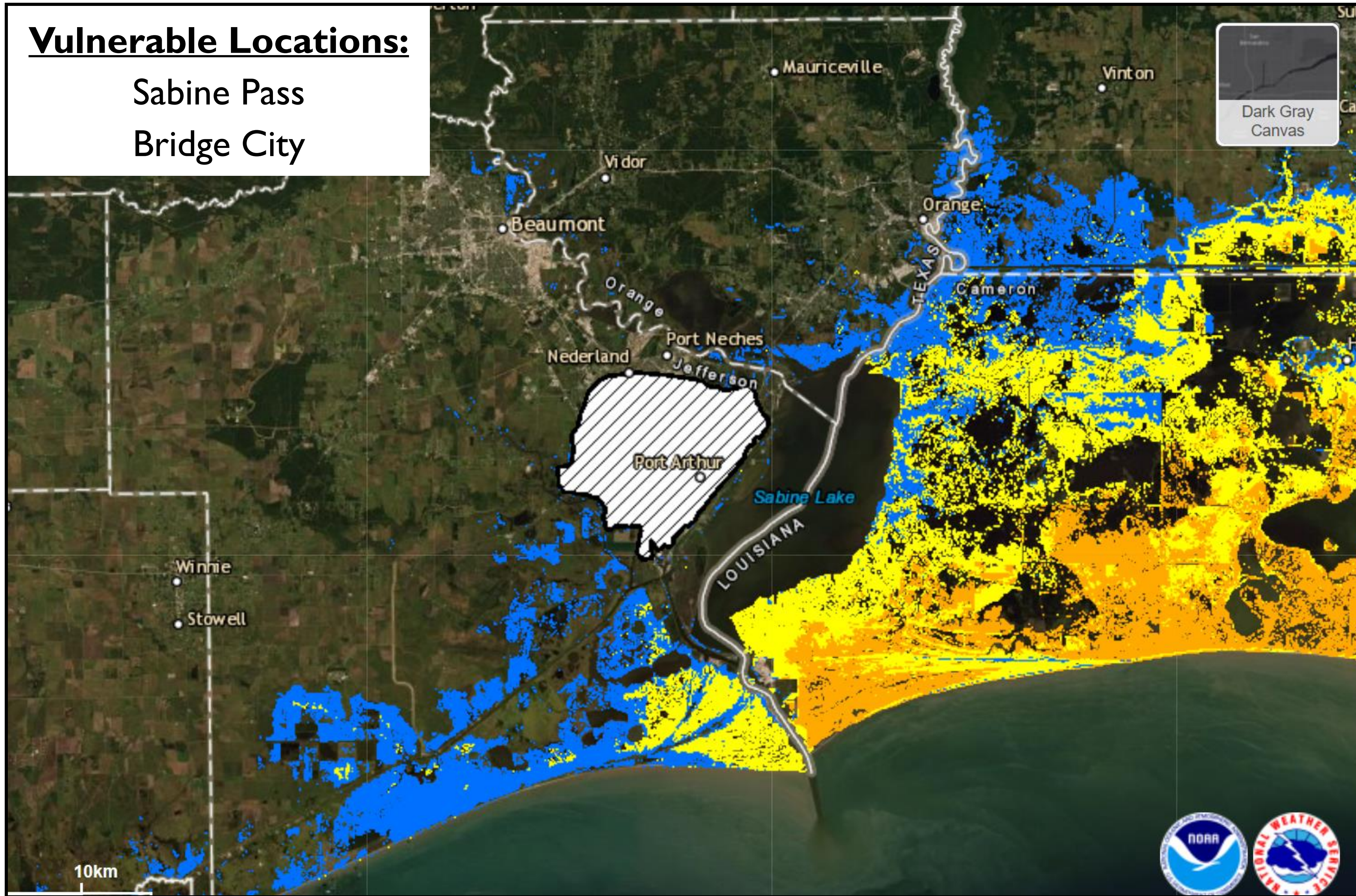
Hurricane Delta



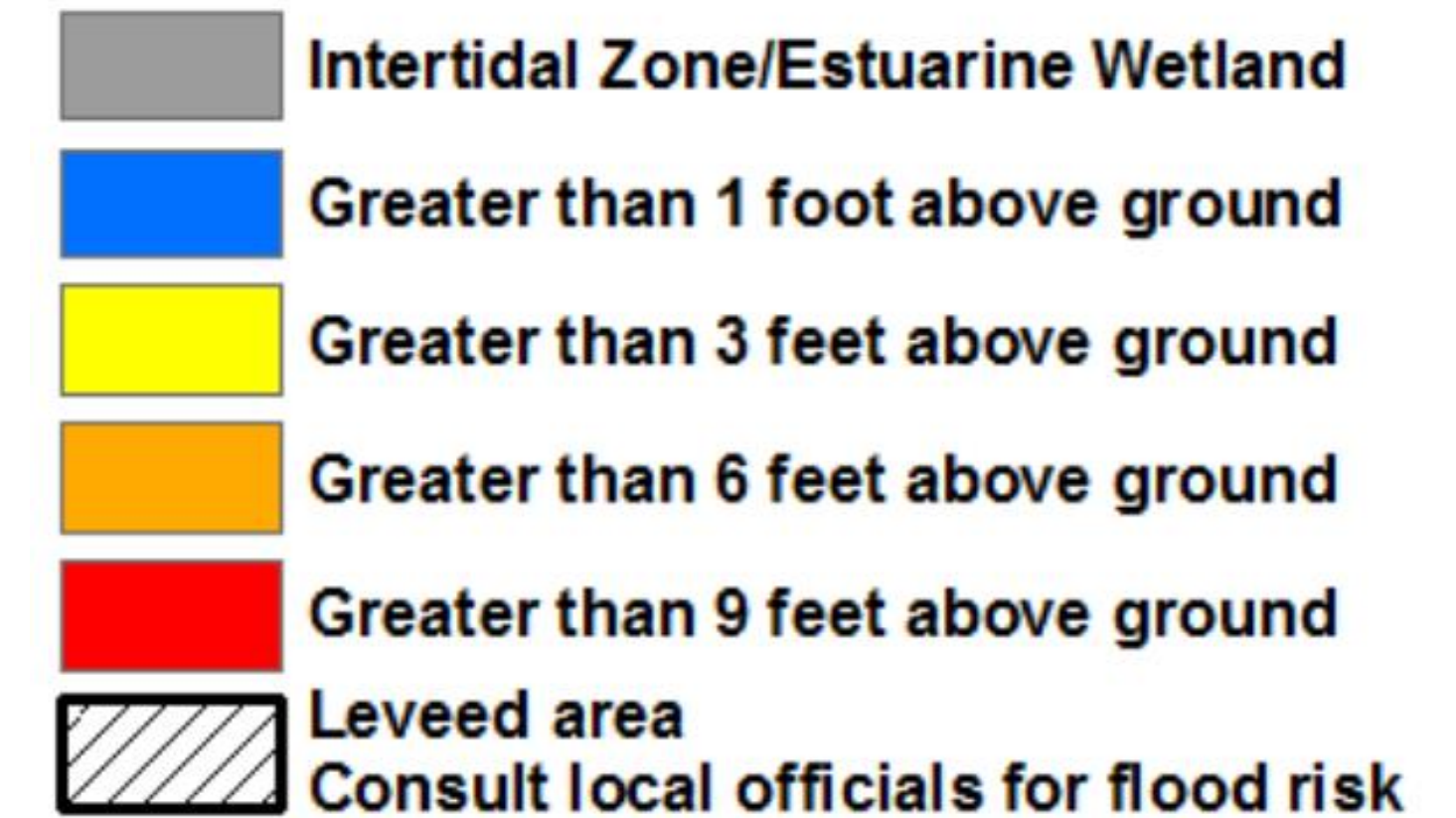
Lake Charles
WEATHER FORECAST OFFICE

Vulnerable Locations:

Sabine Pass
Bridge City



Potential Storm Surge Flooding*



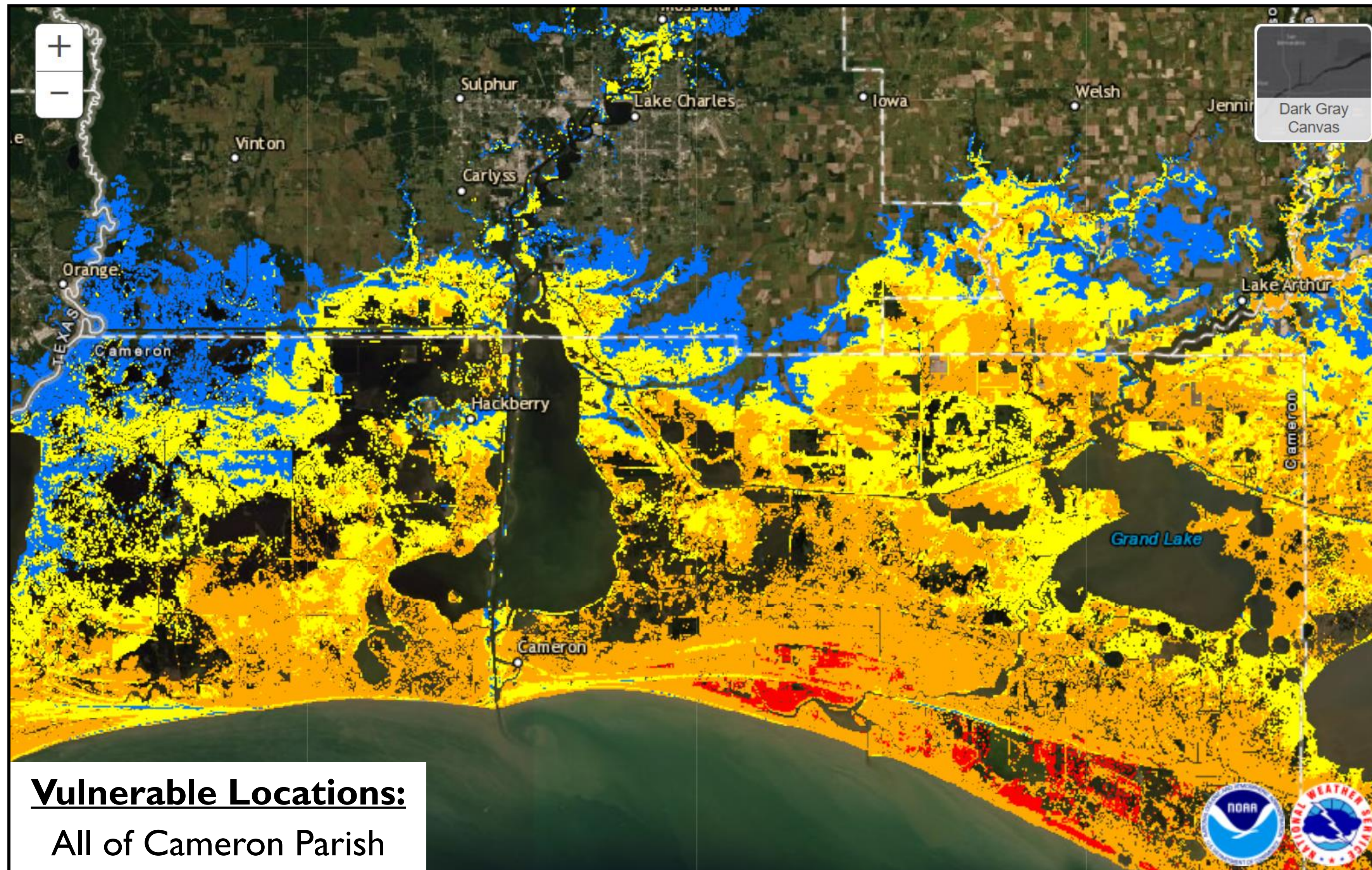
Please Note: This is a reasonable worse case scenario for your region. This values will not verify everywhere.

Potential Storm Surge

Hurricane Delta



Lake Charles
WEATHER FORECAST OFFICE

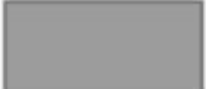







Vulnerable Locations:

All of Cameron Parish

Please Note: This is a reasonable worse case scenario for your region. This values will not verify everywhere.

Potential Storm Surge Flooding*

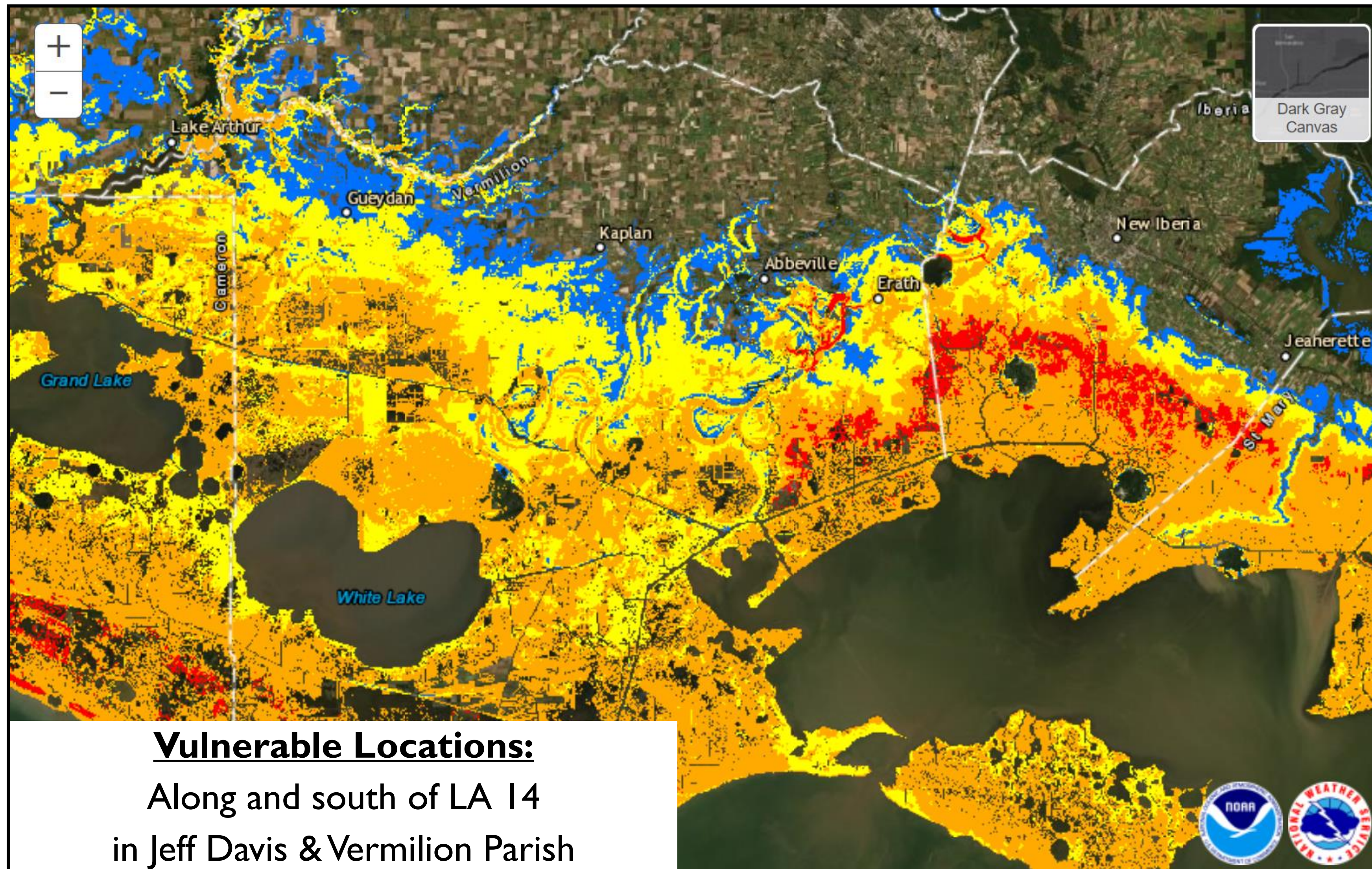
-  Intertidal Zone/Estuarine Wetland
-  Greater than 1 foot above ground
-  Greater than 3 feet above ground
-  Greater than 6 feet above ground
-  Greater than 9 feet above ground
-  Leveed area
Consult local officials for flood risk

Potential Storm Surge

Hurricane Delta



Lake Charles
WEATHER FORECAST OFFICE



Potential Storm Surge Flooding*

- Intertidal Zone/Estuarine Wetland
- Greater than 1 foot above ground
- Greater than 3 feet above ground
- Greater than 6 feet above ground
- Greater than 9 feet above ground
- Leveed area
Consult local officials for flood risk

Please Note: This is a reasonable worse case scenario for your region. This values will not verify everywhere.

Vulnerable Locations:

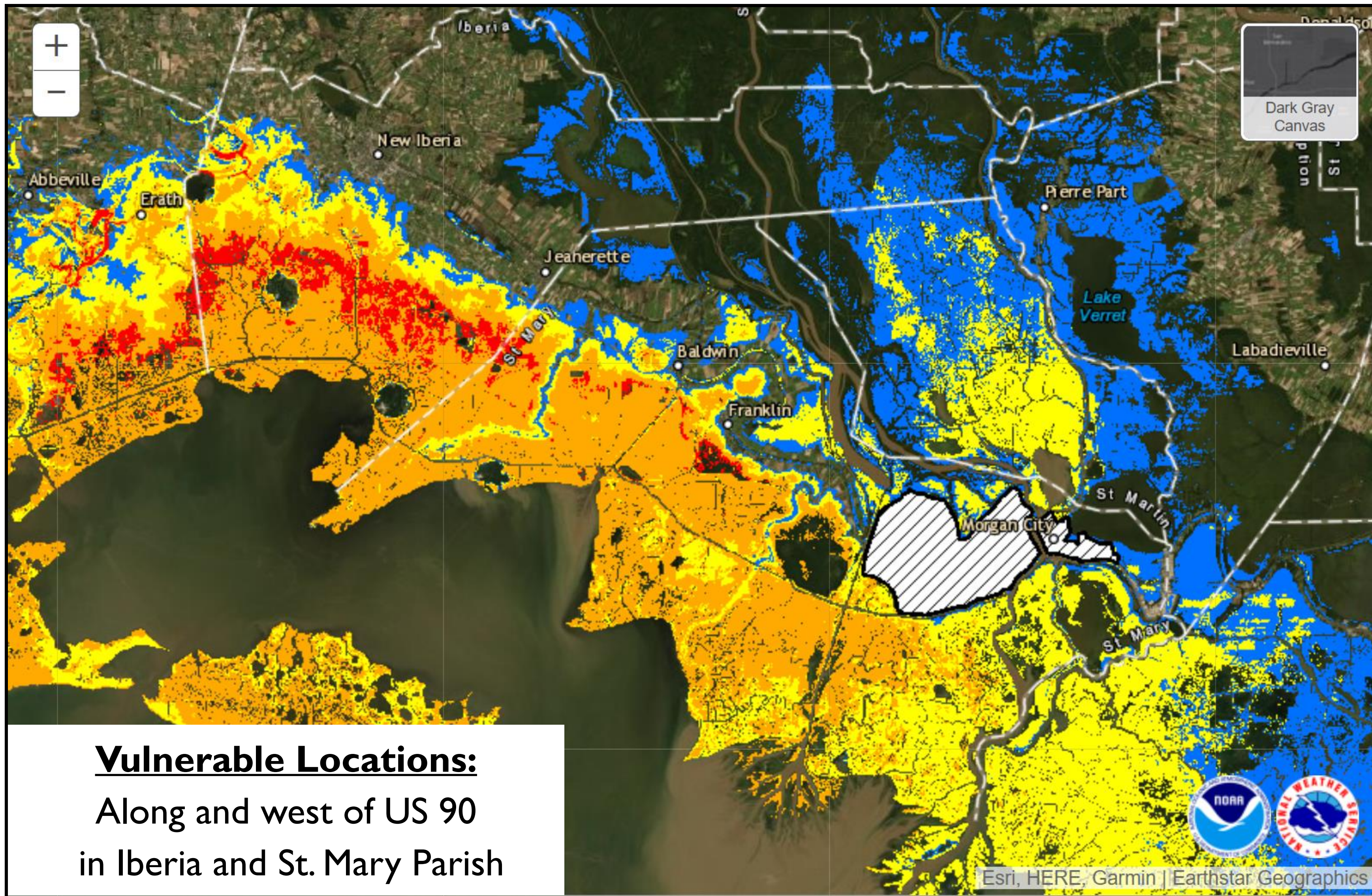
Along and south of LA 14
in Jeff Davis & Vermilion Parish

Potential Storm Surge

Hurricane Delta



Lake Charles
WEATHER FORECAST OFFICE



Vulnerable Locations:

Along and west of US 90
in Iberia and St. Mary Parish

Potential Storm Surge Flooding*

- Intertidal Zone/Estuarine Wetland
- Greater than 1 foot above ground
- Greater than 3 feet above ground
- Greater than 6 feet above ground
- Greater than 9 feet above ground
- Leveed area
Consult local officials for flood risk

Please Note: This is a reasonable worse case scenario for your region. This values will not verify everywhere.

High Tides

Hurricane Delta



Lake Charles
WEATHER FORECAST OFFICE

| | Thursday | Friday | Saturday |
|------------------|-------------------|----------|----------|
| Sabine Pass | 5:12 am, 11:21 pm | none | 12:34 am |
| Calcasieu Pass | 10:54 pm | 11:55 pm | none |
| Freshwater Canal | 11:16 pm | 11:58 pm | none |
| Amerada Pass | 4:31 am | 12:09 am | 12:56 am |

Tides will run one to two feet above normal today.

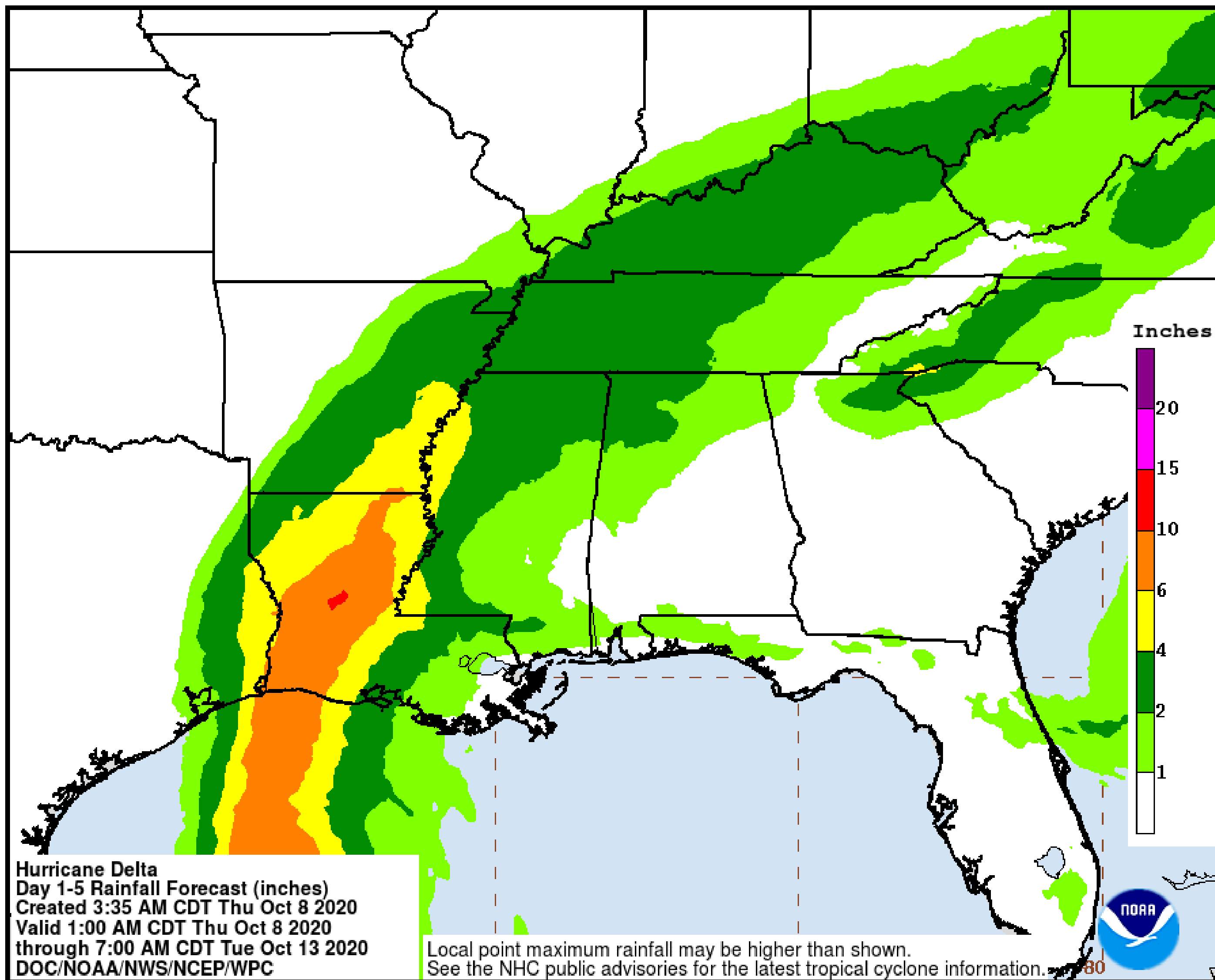
As Delta approaches the coast on Friday, tides will be higher to the east of the center, and lower to the west of the center.

Expected Storm Total Rainfall

Hurricane Delta



Lake Charles
WEATHER FORECAST OFFICE



Rain Totals Through Tuesday

Southeast Texas: 2-5 inches

Southwest Louisiana: 5-8 inches

South Central Louisiana: 2-5 inches

Central Louisiana: 6-10 inches

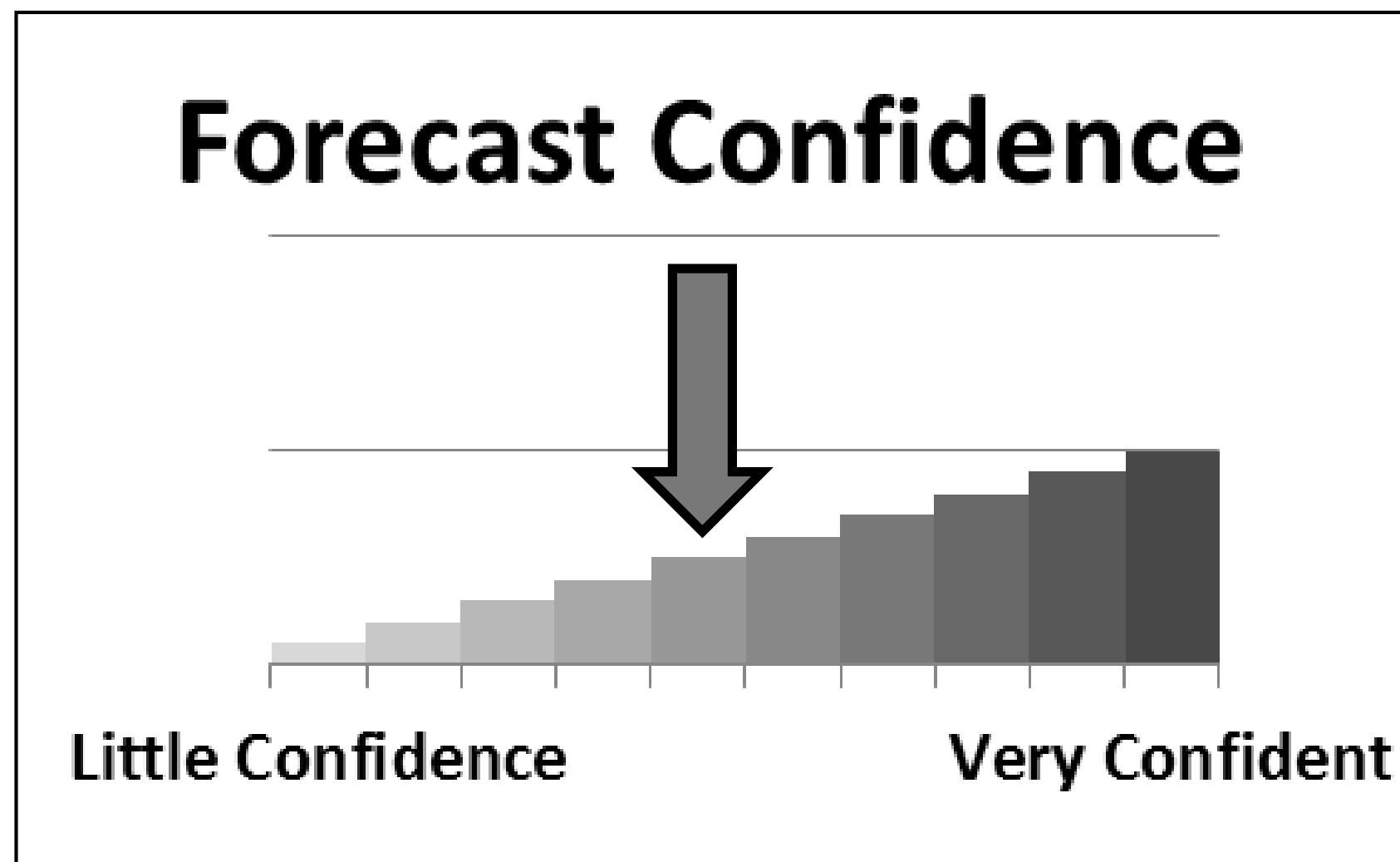
Key Take-Aways

Hurricane Delta



Lake Charles
WEATHER FORECAST OFFICE

- Hurricane Delta has shifted a little more to the west this morning. Because of that, a hurricane warning and storm surge warning has been extended west to Jefferson County.
- Landfall projections show Delta as a category 2 hurricane on Friday afternoon or evening in Cameron Parish, moving to the northeast across parts of southwest, south central, and central Louisiana Friday night.
- Life threatening storm surge, dangerous hurricane force winds, and heavy rain are expected along and east of the track of Delta as it moves inland across Louisiana.



We have **average confidence** on the track and intensity of Delta.

Local weather impacts will be highly dependent on where Delta makes landfall.



The Next Briefing: Today 4:00 PM CDT



Web: <http://weather.gov/lakecharles>



Phone: (337) 477-5285 x1



E-mail: roger.erickson@noaa.gov



Facebook: NWSLakeCharles



Twitter: NWSLakeCharles



YouTube: NWSLakeCharles

For the latest graphics and information go to: www.hurricanes.gov or www.weather.gov/srh/tropical?office=lch



NWSLakeCharles

www.weather.gov/LakeCharles