



Tropical Depression Nine BRIEFING

10:00 AM CDT
Thursday, August 26, 2021

What has changed: NHC initiates advisories on Tropical Depression 9

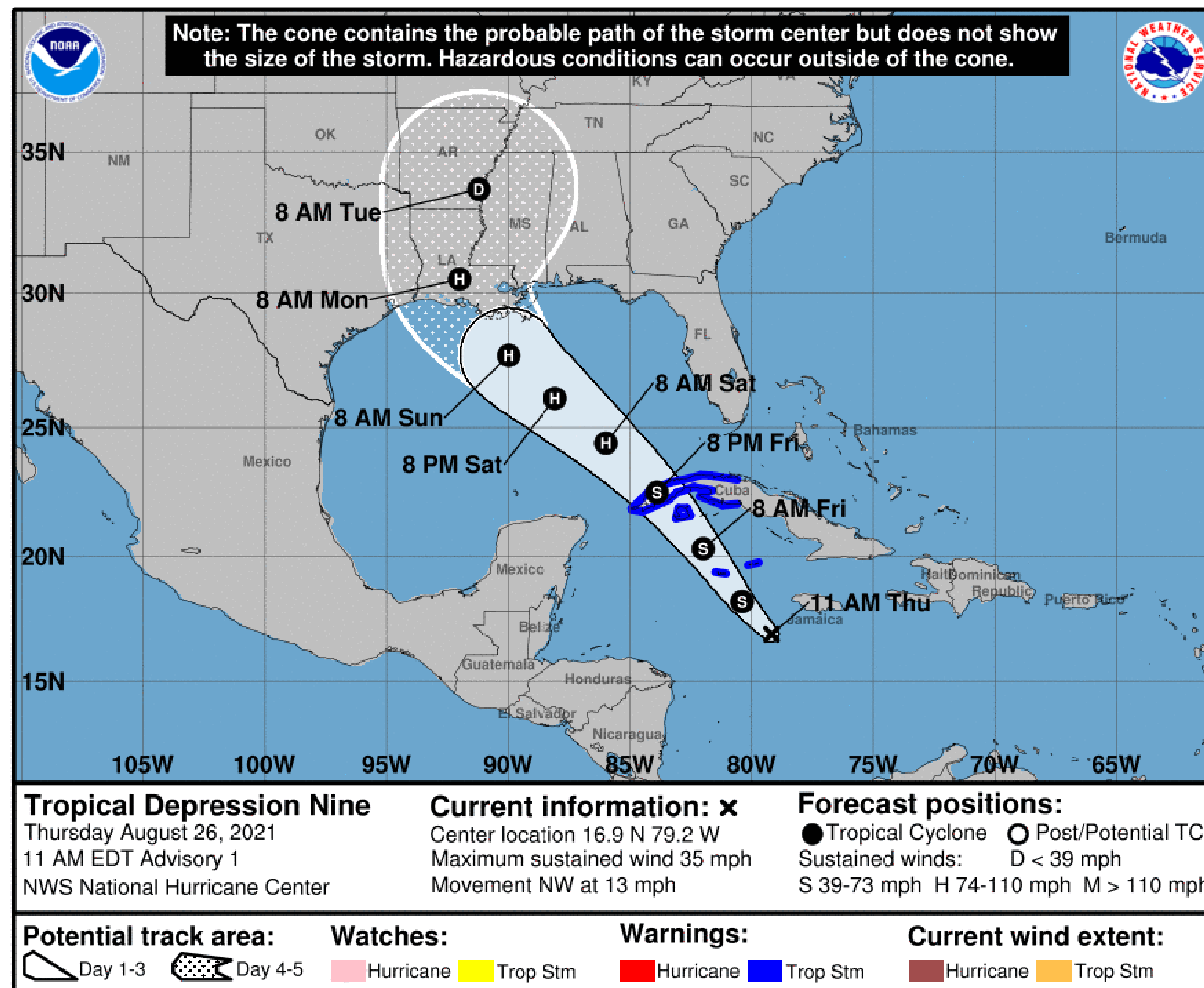
Next Briefing: Thursday, August 26 at 4 pm CDT

Disclaimer: The information contained within is time-sensitive. Do not use after 4:00pm CDT Thursday.



Situation Overview

Tropical Depression Nine



NOTE: Do not focus on the exact track.

Impacts can occur well outside the area enclosed by the cone.

10:00 AM CDT Thu Aug 26

Location: *16.9°N 79.2°W*

Moving: *NW at 13 mph*

Min pressure: *1005 mb*

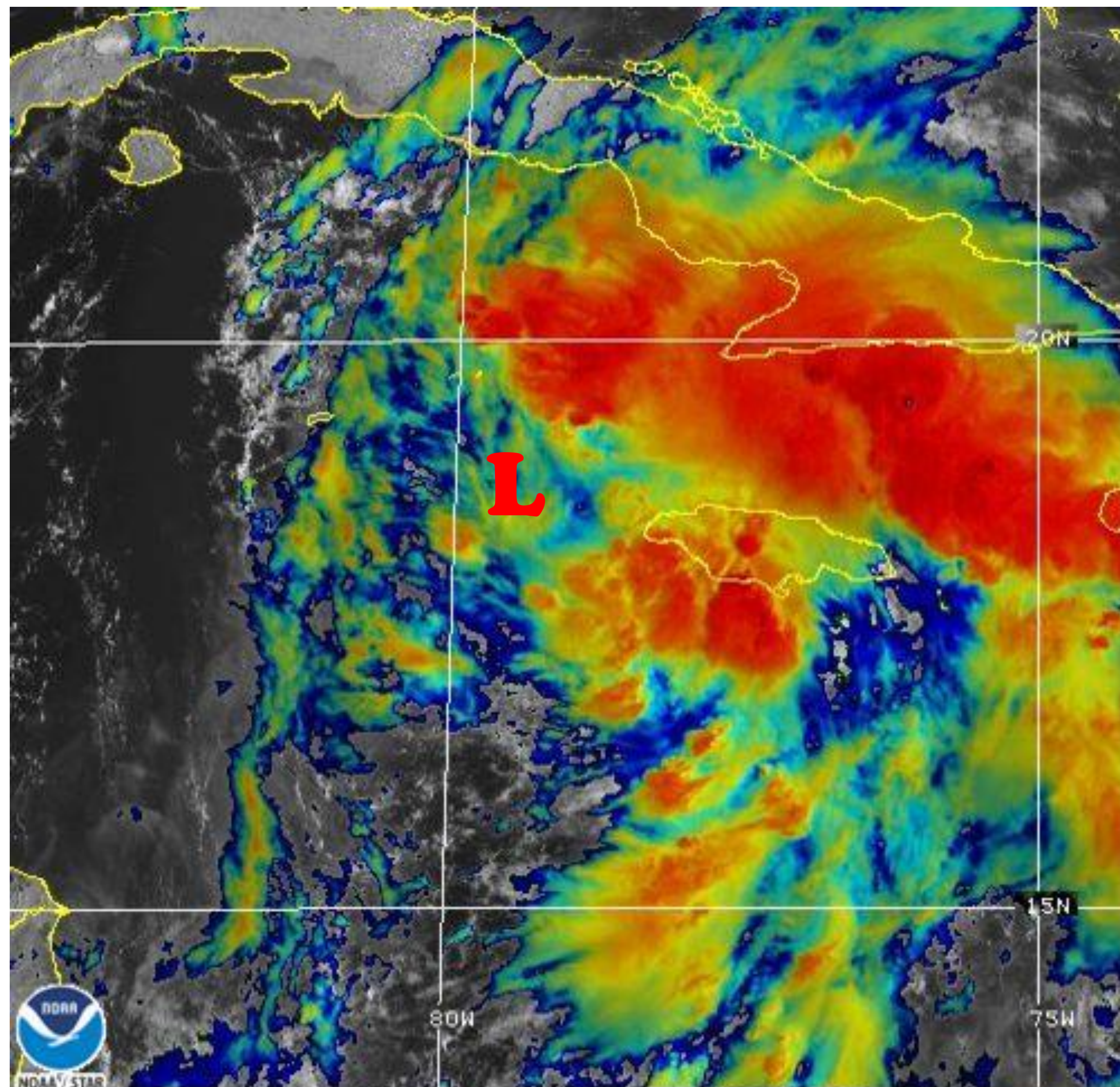
Max sustained: *35 mph*

- It will reach the Louisiana coast Sunday night.
- Tides are already running a foot above normal, and daily showers and thunderstorms are expected leading up to landfall.



Current Satellite View

Tropical Depression Nine



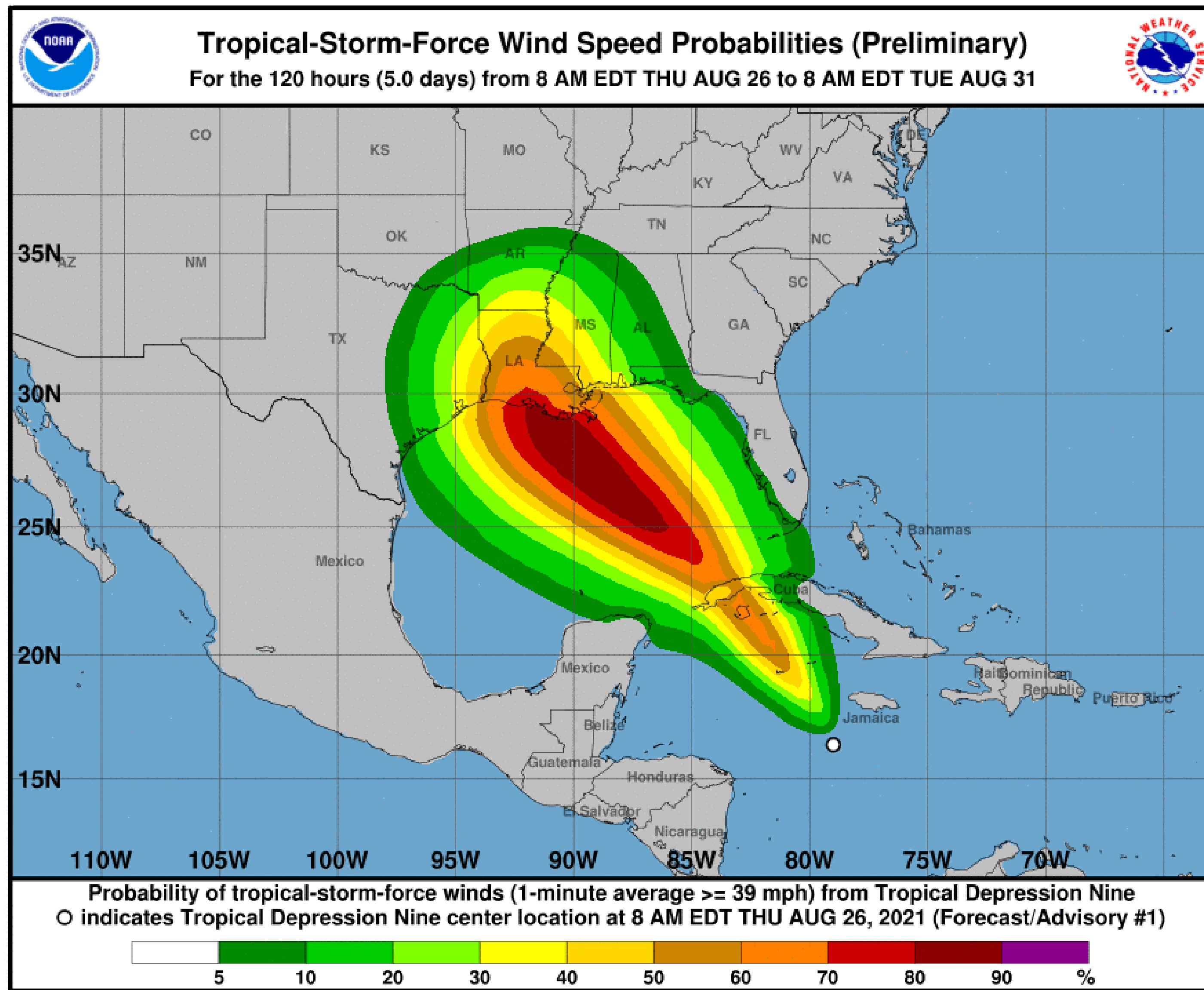
26 Aug 2021 14:28Z NESDIS/STAR GOES-East Sandwich

- Tropical Depression 9 is disorganized south of Cuba.
- It will get better organized tonight and Friday as it gets in a better environment with less wind shear.



Tropical Storm Wind Speed Probabilities

Tropical Depression Nine



Southeast Texas: 30-50%

East Texas: 30-50%

Southwest Louisiana: 50-70%

South Central Louisiana: 60-80%

Central Louisiana: 50-70%

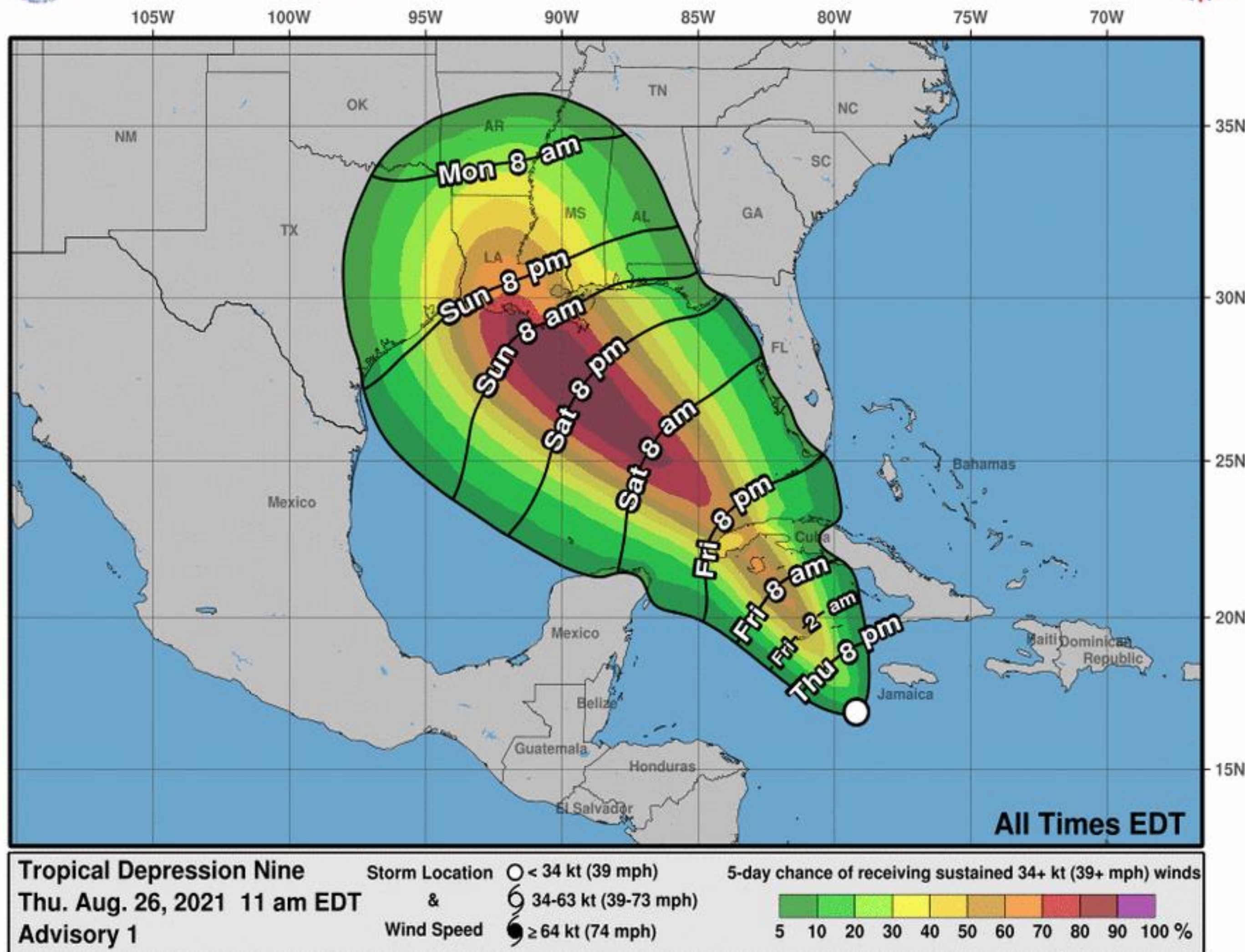


Timing of Tropical Storm Winds

Tropical Depression Nine



Most Likely Arrival Time of Tropical-Storm-Force Winds



Southeast Texas: Sunday evening

East Texas: Sunday night

Southwest Louisiana: Sunday evening

South Central Louisiana: Sunday evening

Central Louisiana: Sunday night



Hurricane Wind Speed Probabilities

Tropical Depression Nine



Southeast Texas: 5-20%

East Texas: 5-20%

Southwest Louisiana: 10-30%

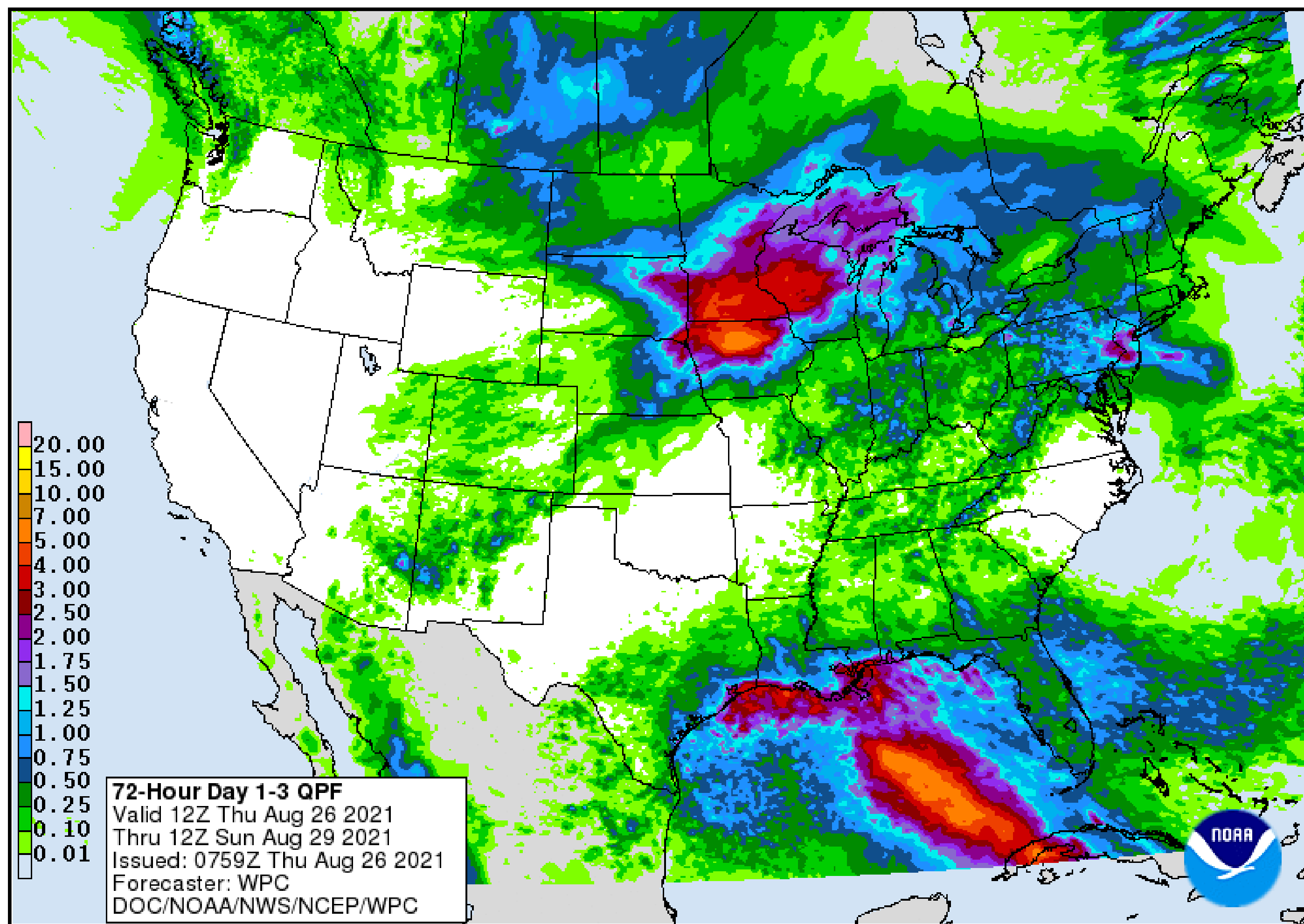
South Central Louisiana: 10-30%

Central Louisiana: 5-20%



Storm Total Rainfall Through Sunday Morning

Tropical Depression Nine



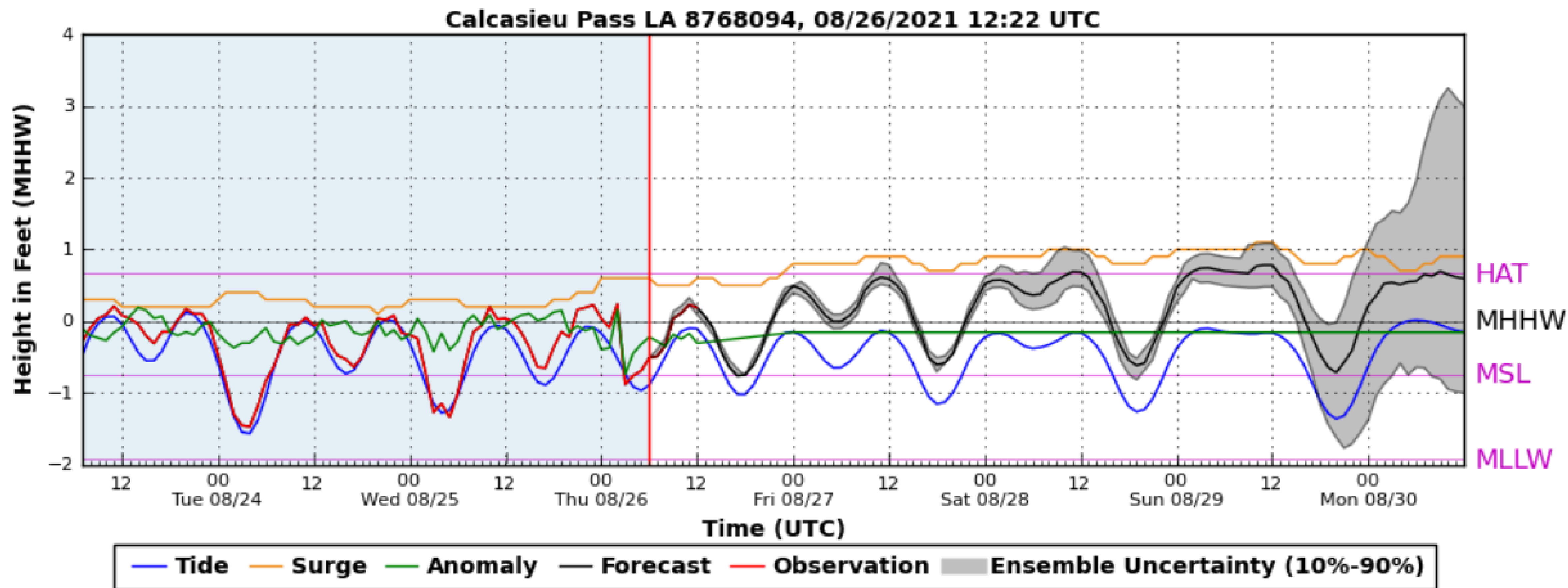
- Thanks to an upper level low, we are expecting daily showers and thunderstorms, some of which could extend into the overnight hours.
- Some areas could see street flooding during periods of heavy rains.

Note: There will likely be locally higher amounts



Tides

Tropical Depression Nine

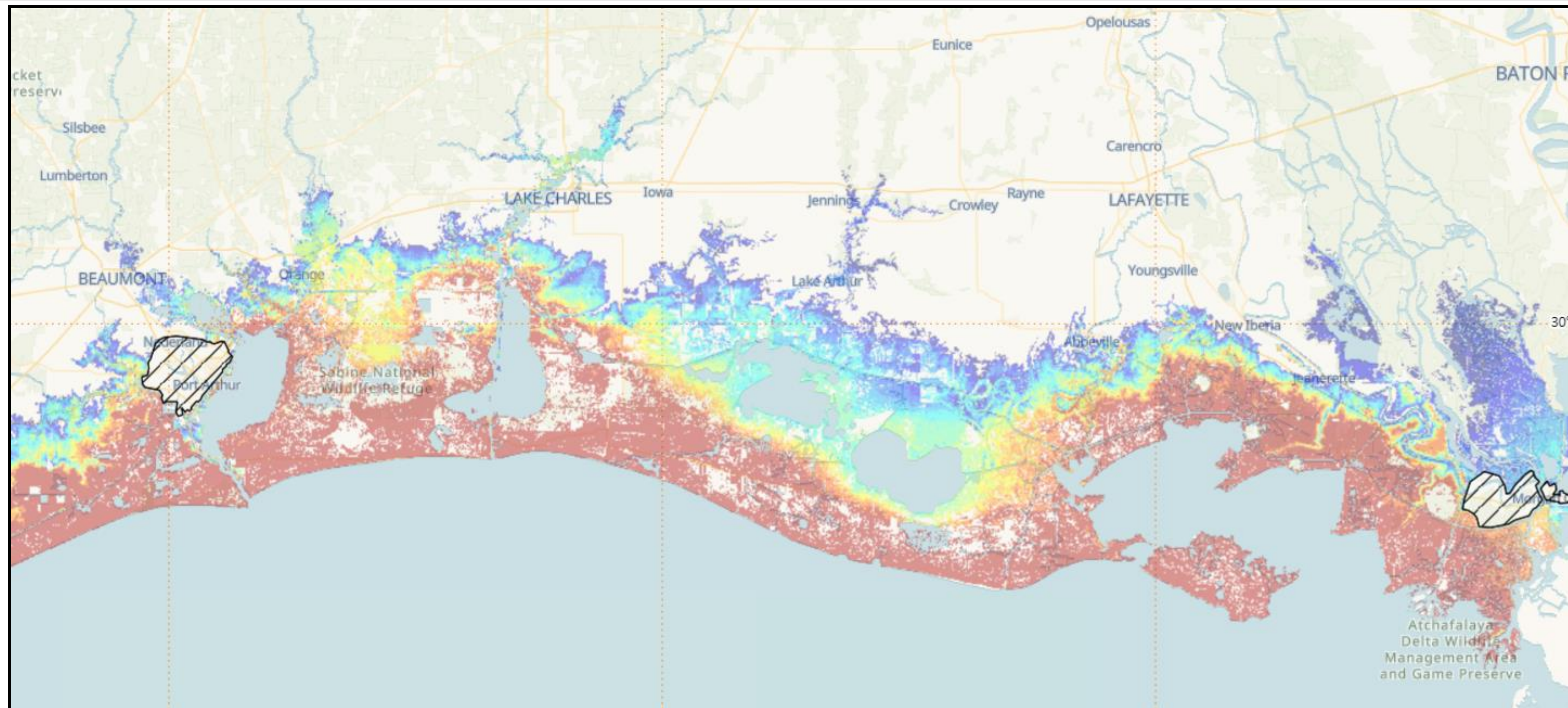


Tides will run one foot above normal through Saturday. Depending on the exact landfall location, tides could run over 3 feet above normal by Sunday afternoon.



Storm Surge Worst Case Scenario

Tropical Depression Nine



A reminder that for a category 3 hurricane moving north at 15 mph, here is the areas that could potentially flood from the storm surge.

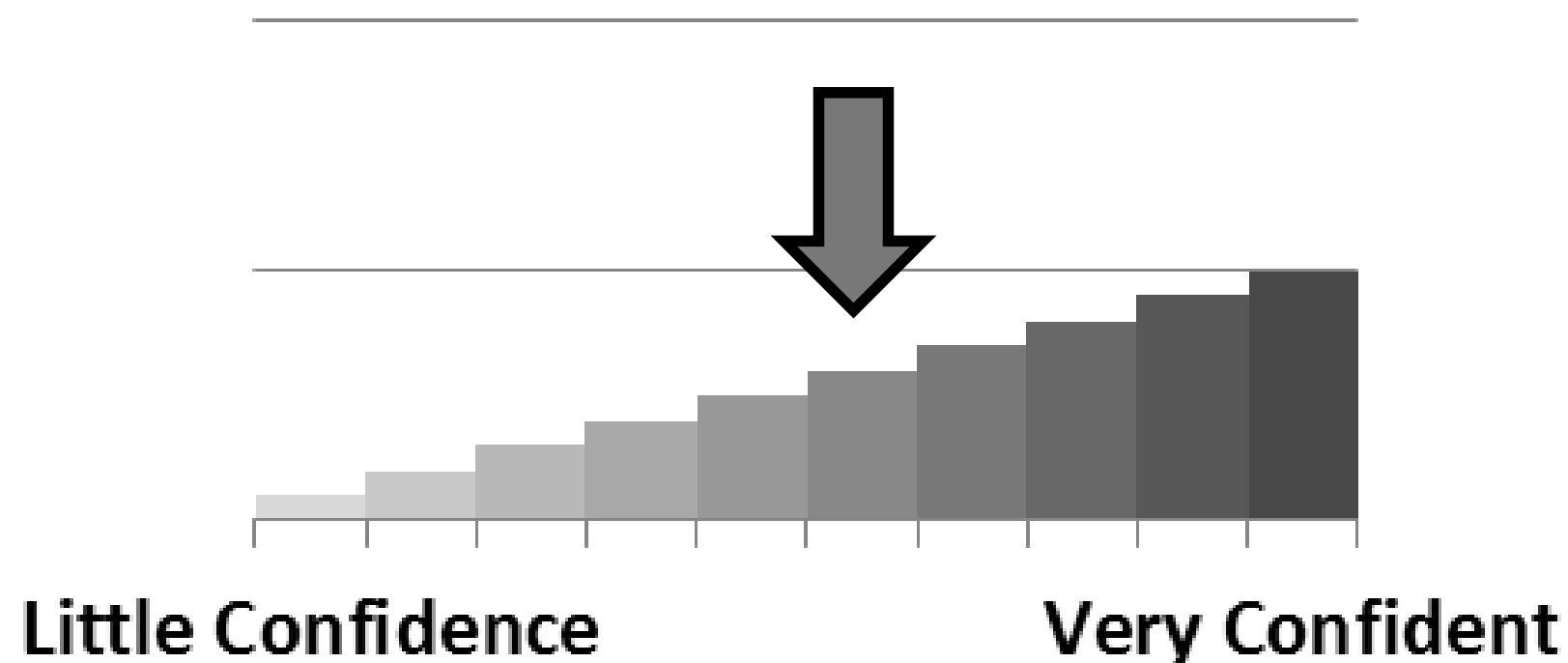


Key Take-Aways

Tropical Depression Nine

- TD 9 has formed in the west central Caribbean. It is expected to become a major hurricane (category 3 or stronger) before landfall on the Louisiana coast, sometime late Sunday or Monday.
- Life threatening storm surge and hurricane force winds are expected. Heavy rains and tornadoes will also pose a problem. Typically the worst part of a hurricane is where it makes landfall, and places to its east. Since we are in the early stages of TD 9, all areas of the Louisiana coast are at risk.

Forecast Confidence



There is medium confidence this system will make landfall in Louisiana.

There is high confidence this system will cause life threatening storm surge and hurricane force winds.



Next Briefing: Thursday 4:00 PM CDT Method: Webinar



Web: <http://weather.gov/lakecharles>



Phone: (337) 477-5285 x1



E-mail: roger.erickson@noaa.gov



Facebook: NWSLakeCharles



Twitter: NWSLakeCharles



YouTube: NWSLakeCharles

For the latest graphics and information go to: www.hurricanes.gov or weather.gov/lch/tropic